

## INSTALLATION MANUAL FOR SURFACE MOUNT RTFFR4 AND RTFFR56

### SAVE THESE INSTRUCTIONS - READ ALL INSTRUCTIONS CAREFULLY

LED DISK LIGHT provides surface mount light for 4" junction boxes & fire rated boxes.  
It is also suitable for use in dry, damp and wet locations.

### WARNING



### PLEASE READ ALL INSTRUCTIONS BEFORE ATTEMPTING INSTALLATION.

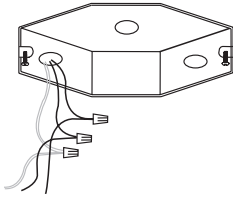
- To prevent personal injury or product damage only licensed electricians/personnel should install fixture.
- To avoid electric shock or component damage disconnect power before attempting installation or servicing.
- This product must be installed in accordance with the National Electric Code (NEC) and all applicable Federal, State/Provincial and Local Electric Codes and Safety Standards.
- **Risk of Fire** Supply conductors (power wires) connecting the fixture must be rated minimum 90°C. If uncertain, consult your licensed electricians.

### TECHNICAL SPECIFICATION

**VOLTAGE:** 120V, 60Hz AC operation  
**WATTAGE:** 10W-20 pcs LED chips, 15W-28 pcs LED chips  
**LUMENS:** 10W, 600LMS, CR80, 15W, 1000LMS, CR180  
**DIFFUSER:** Translucent white PC opal diffuser  
**HARDWARE:** All mounting screws and wire connectors  
**TOOL USE:** Phillips screw driver and glue gun  
**WARRANTY:** 5 Years, limited warranty

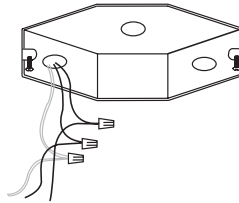
## INSTALLATION

figure #1



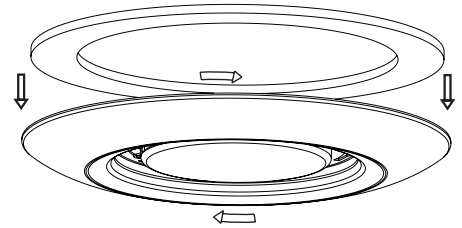
Step 1) Prior to installation, please install two screws (furnished) into the junction box. Do not drive screws completely to the end of the junction box.

figure #2



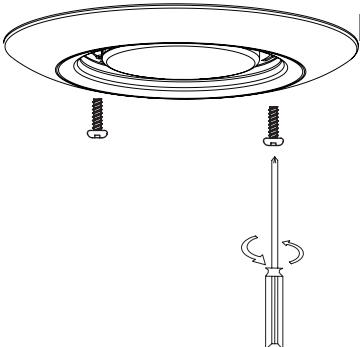
Step 2) Connect supply wires to wires in fixture wiring box with proper size wire nuts or push wires into "push-in" connector. Connect white to white, black to black, and green or bare copper to bare copper wire.

figure #3



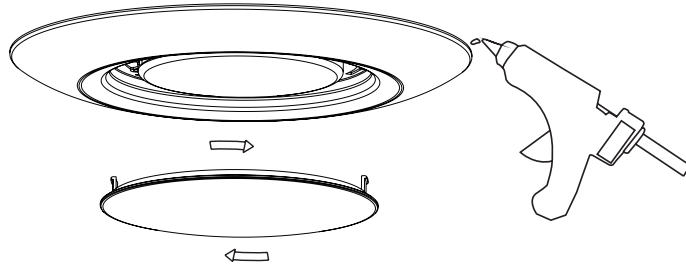
Step 3) The ground wire at the service junction box may need to be secured to a ground screw.

figure #4



Step 4) With a Phillips screwdriver, attach the disk light tightly to the j-box.

figure #5



Step 5) Complete the installation by twisting the diffuser on the disk light aluminum enclosure and lock the diffuser in place.  
 Step 6) The edge of the fixture and the ceiling use waterproof silicone to seal